

But seek the welfare of the city where
I have sent you into exile, and pray to
the Lord on its behalf, for in its welfare
you will find your welfare. Jeremiah
29:7

Cool Spring is all about living connected – connected to each other, to our COMMUNITY, and most importantly, to Christ.

Because of this, we want to create play and rethink space for COMMUNITY.

The Appeal

You may have noticed that the past twenty months have left people feeling frustrated, worried, angry, weary, and lonely, with a profound need for connection and community.

The good news is, we have an opportunity as a church to meet that need...to be a place that--without even using words--says, "You are welcome here."

And sometimes (like now), opportunities to meet the needs of a community come in unusual forms--like a soccer field. Or a playground.

Each may seem like an ordinary part of the neighborhood, but please understand that here...

It's not just a community sports field; it's a mission field, where you learn that sometimes you win, sometimes you lose--but ultimately, we are all on the same team.

It's not just a playground; it's holy ground, dedicated to God, who created children with an exuberant *need* to play.

An investment in these has the potential to change lives if this space reads like an invitation to come on in, whoever you are, exactly as you are...and experience the connection--with others and with God--we've all been missing.

Business Meeting Motion | Sunday, January 23, 2022

The recommendation coming from the Ministry Council is to develop a recreational field, construct a pavilion, and replace the school-age playground at a cost not to exceed \$1,400,000.00. The church further authorizes the borrowing of funds not to exceed 80% of the cost of the stated projects.



*not just a
community field...*





it's a mission field

Community
INVESTMENT



PATRICIA J. MILLS
 GPIN: 7796-85-609.3
 D.B. 94 PG. 446
 ZONED: R-1
 LAND USE: RESIDENTIAL

TRUSTEES, COOL SPRING
 BAPTIST CHURCH
 GPIN: 7796-84-1791
 D.B. 2886 PG. 147
 ZONED: A-1
 LAND USE: VACANT
 2.974 ACRES

TRUSTEES, COOL SPRING
 BAPTIST CHURCH
 GPIN: 7796-74-8576
 D.B. 2886 PG. 147
 ZONED: A-1
 LAND USE: RESIDENTIAL
 1.952 ACRES

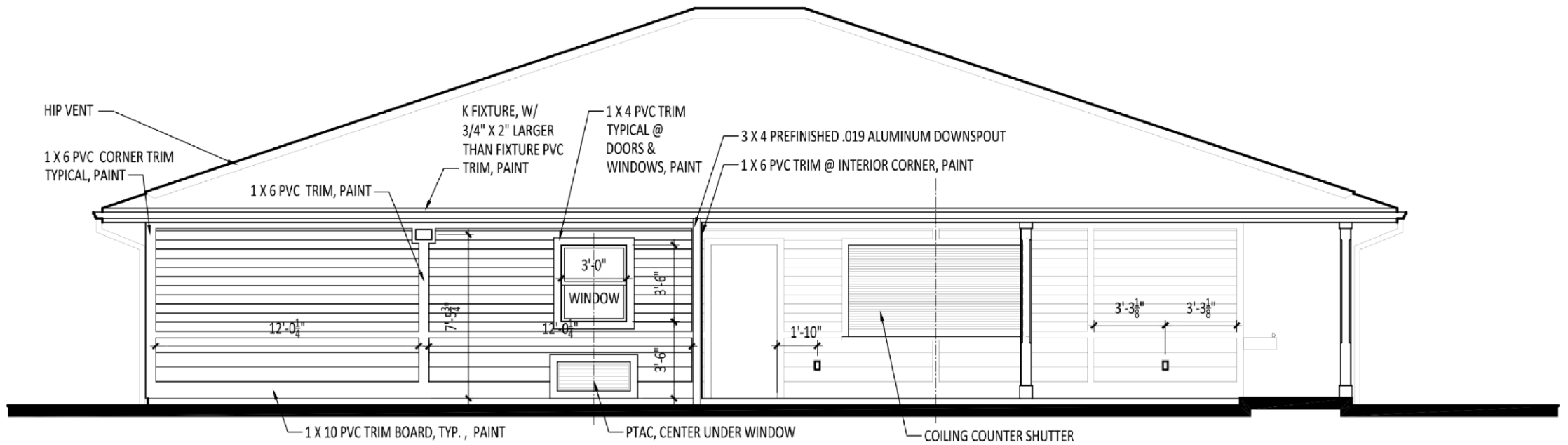
TRUSTEES, COOL SPRING
 BAPTIST CHURCH
 GPIN: 7796-84-0139
 D.B. 2619 PG. 718
 ZONED: A-1
 LAND USE: RESIDENTIAL

TRUSTEES, COOL SPRING
 BAPTIST CHURCH
 GPIN: 7796-84-2248
 D.B. 1742 PG. 263
 ZONED: A-1
 LAND USE: RESIDENTIAL

TRUSTEES, COOL SPRING BAPTIST CHURCH
 GPIN: 7796-84-2248
 D.B. 1742 PG. 263
 ZONED: A-1
 LAND USE: RESIDENTIAL

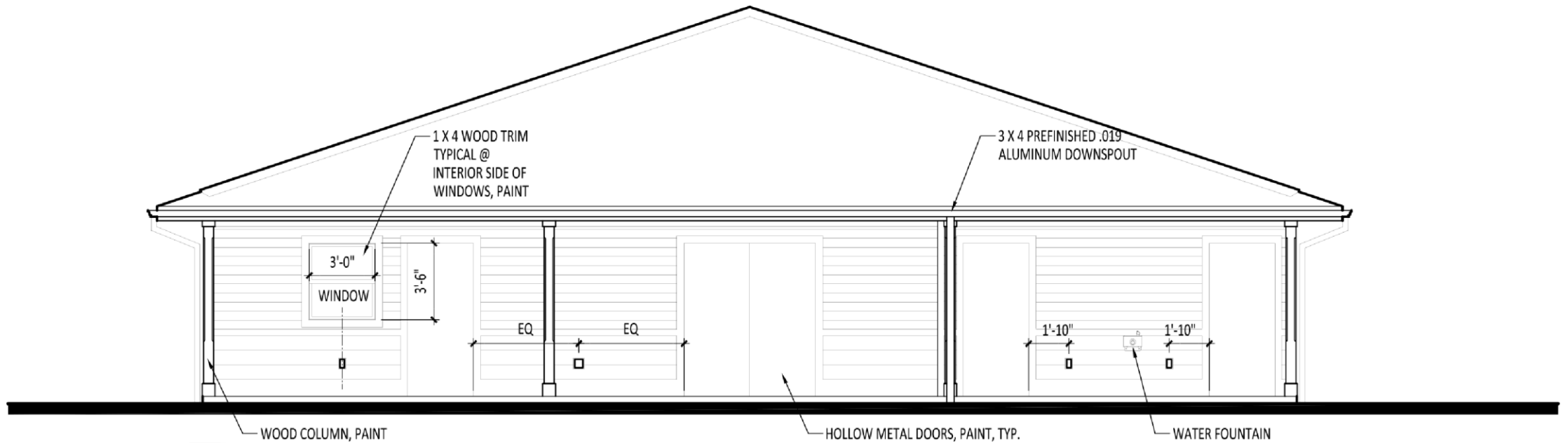
**Communities
 INVESTMENT**





A
 PAVILION
EAST ELEVATION
 A1.0 A4.0 SCALE: 1/4" = 1'-0"

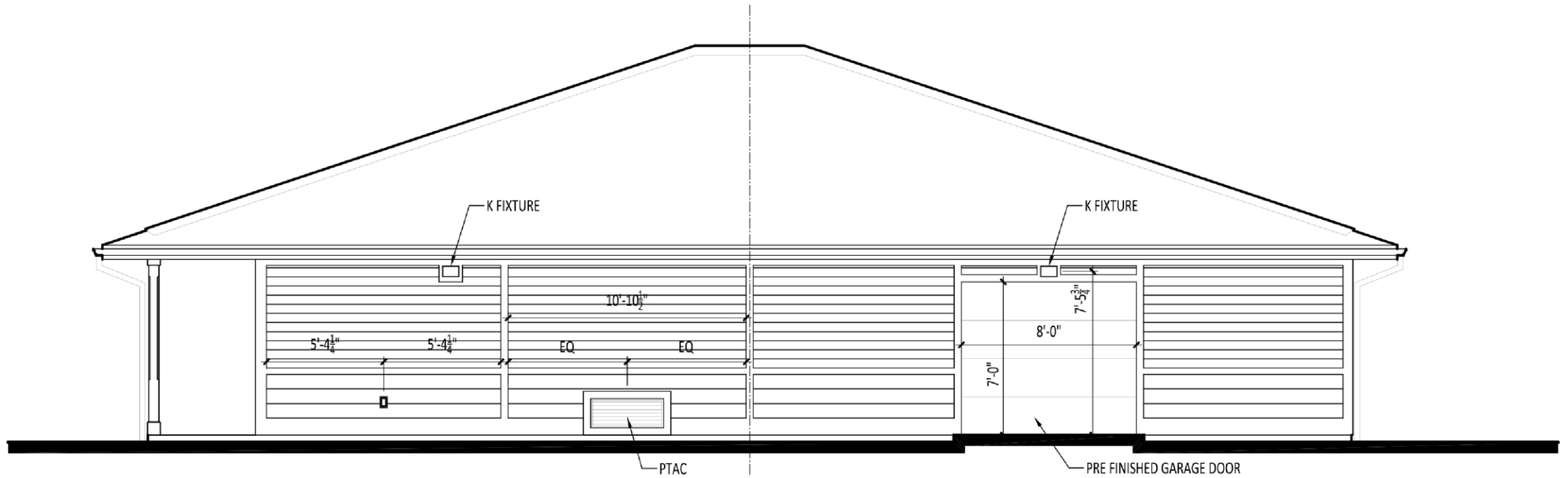




B WOOD COLUMN, PAINT PAVILION
NORTH ELEVATION

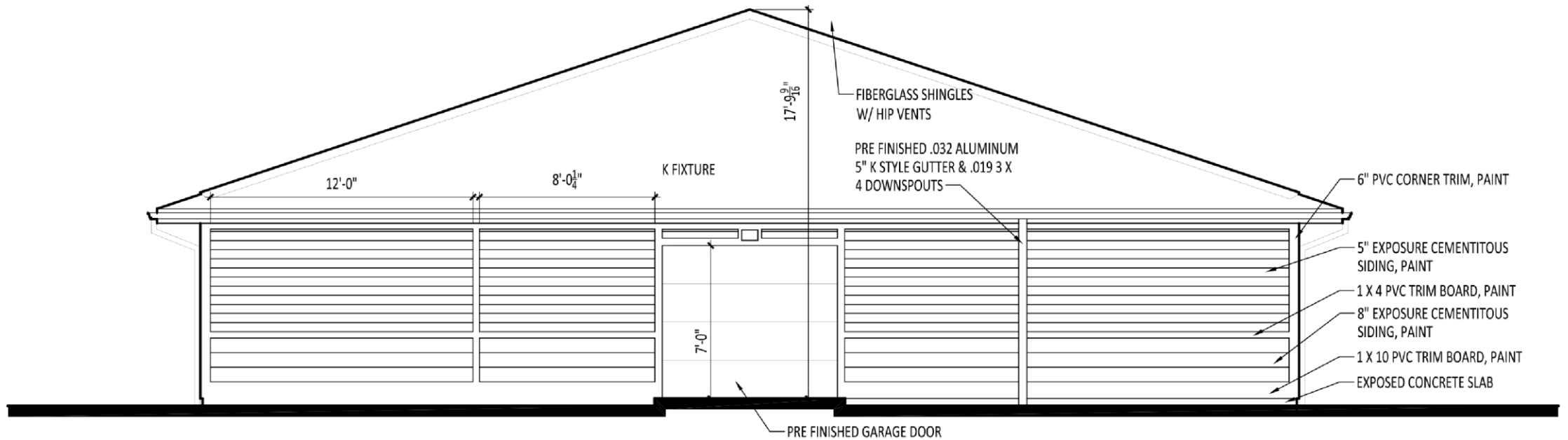
A1.0 A4.0 SCALE: 1/4" = 1'-0"





C PAVILION
WEST ELEVATION
 A1.0 A4.0 SCALE: 1/4" = 1'-0"





D PAVILION
SOUTH ELEVATION
 A1.0 A4.0 SCALE: 1/4" = 1'-0"





Communities
INVESTMENT



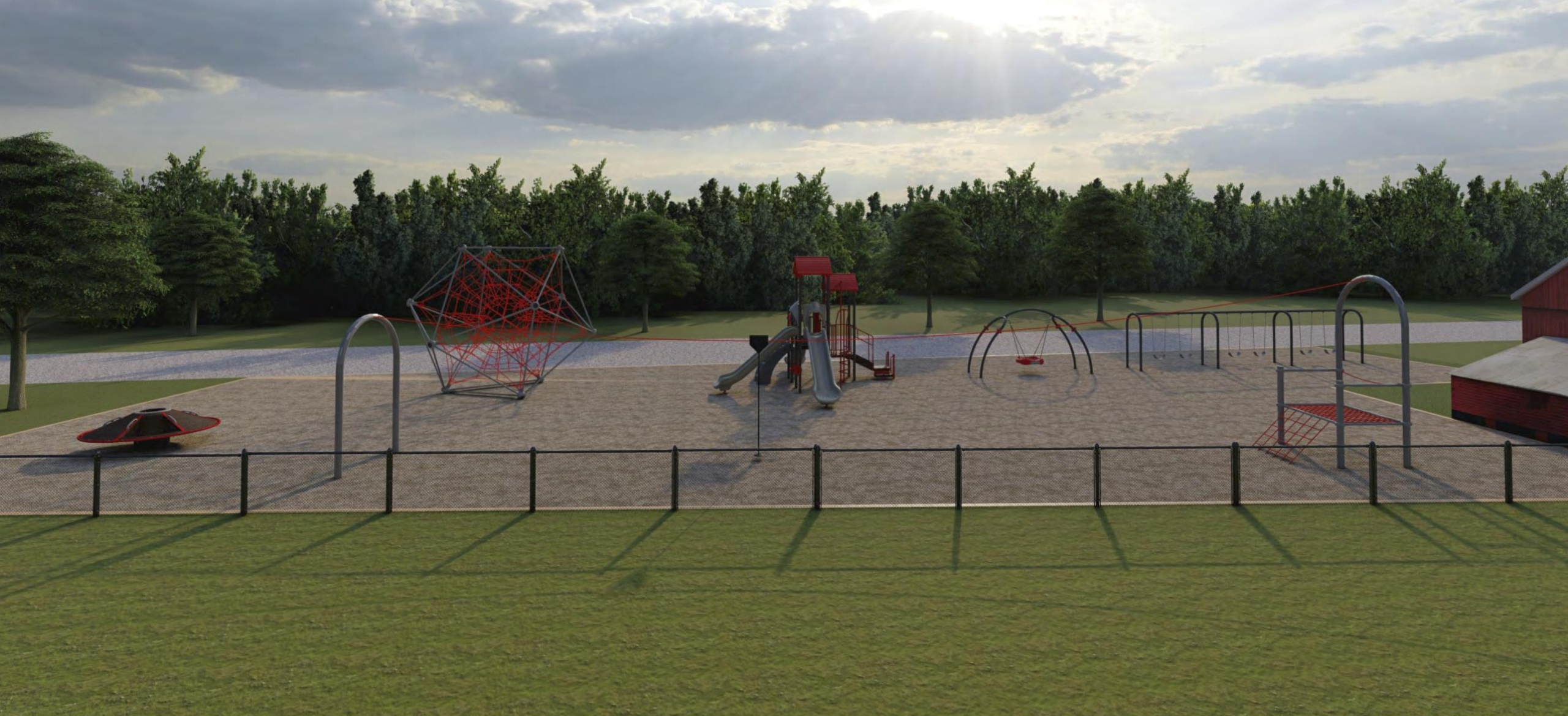
*not just a
playground...*

Communities
INVESTMENT



it's holy ground

Communities
INVESTMENT



Cool Springs Baptist Church

playground
Specialists Inc.

800.385.0075
www.playspec.com
sales@playspec.com





Cool Springs Baptist Church

playground
Specialists Inc.

800.385.0075
www.playspec.com
sales@playspec.com

● ● ● ●
RED MGY GST ECO



Cool Springs Baptist Church

playground
Specialists Inc.

800.385.0075
www.playspec.com
sales@playspec.com

● ● ● ●
RED MGY GST ECO



Cool Springs Baptist Church

playground
Specialists Inc.

800.385.0075
www.playspec.com
sales@playspec.com

● ● ● ●
RED MGY GST ECO

EQUIPMENT SIZE:
X' x Y' x Z'

USE ZONE:
X' x Y'

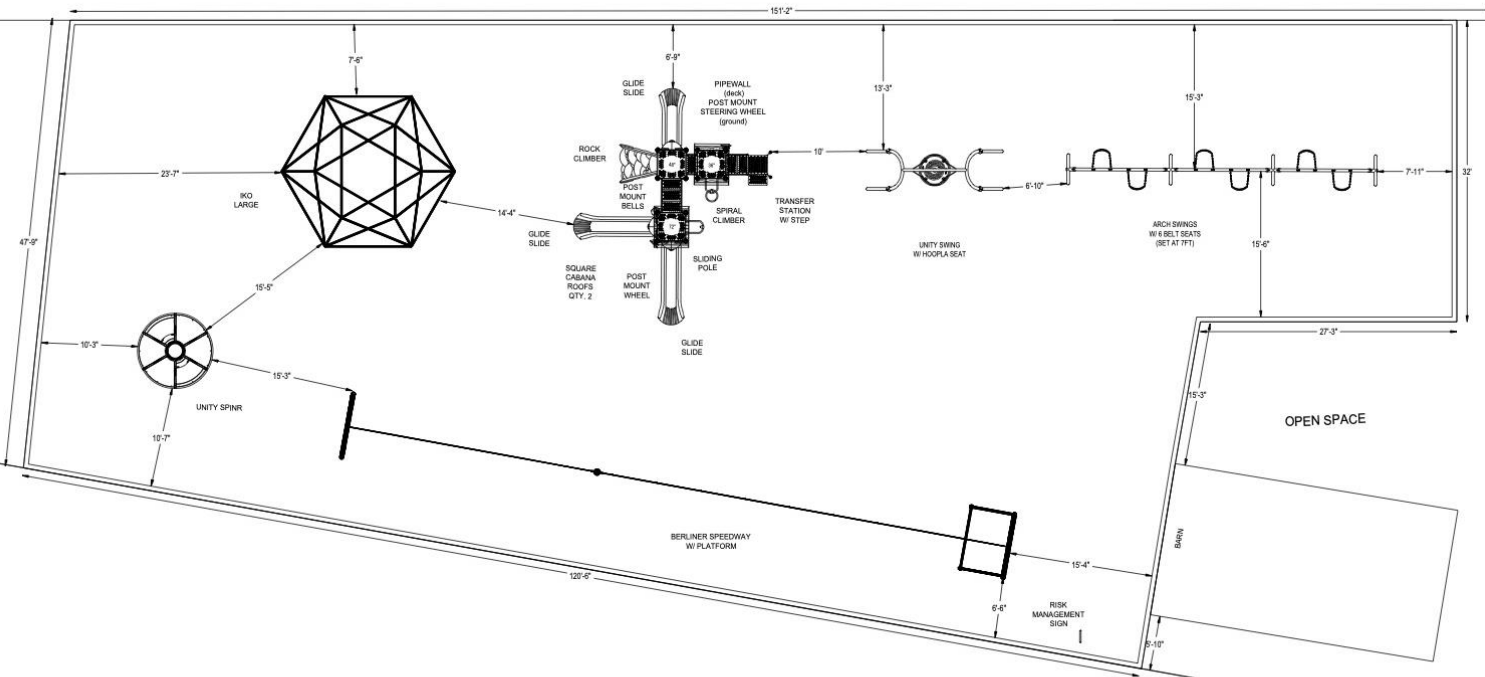
AREA:
7771 SqFt.

PERIMETER:
409 Ft.

FALL HEIGHT:
10 Ft.

USER CAPACITY:
80

AGE GROUP:
5-12



Cool Springs Baptist Church
5-12 Area

ADA SCHEDULE	Total Elevated Play Activities: X		
	Total Ground-Level Play Activities: X		
	Accessible Elevated Activities	Accessible Ground-Level Activities	Accessible Ground-Level Play Types
Required	X	X	X
Provided	X	X	X

- ✓ ASTM F1487-11
- ✓ CPSC #325



PROJECT NO:
P081319-2I

SCALE:
1/16"=1'-0"

*not just a
sanctuary...*



Communities
INVESTMENT



*it's a refuge,
a harbor
a shelter, a retreat...*

Communities
INVESTMENT



You are welcome here



Communities
INVESTMENT